

# THE ELE MARATHON

www.unav.edu/ilce

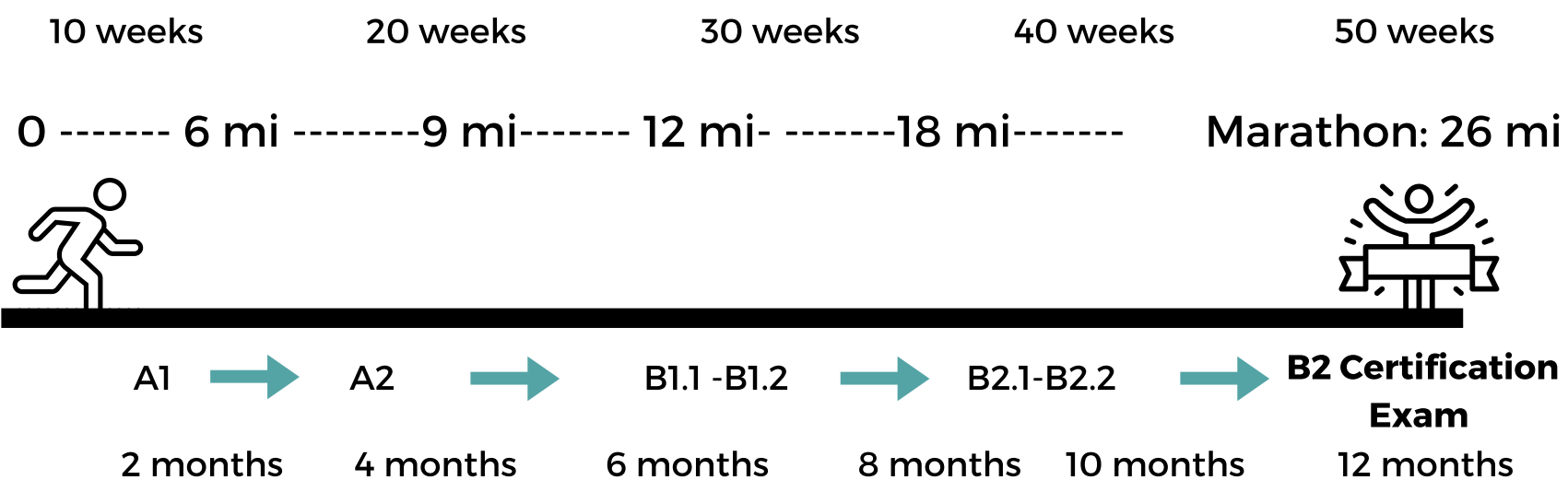
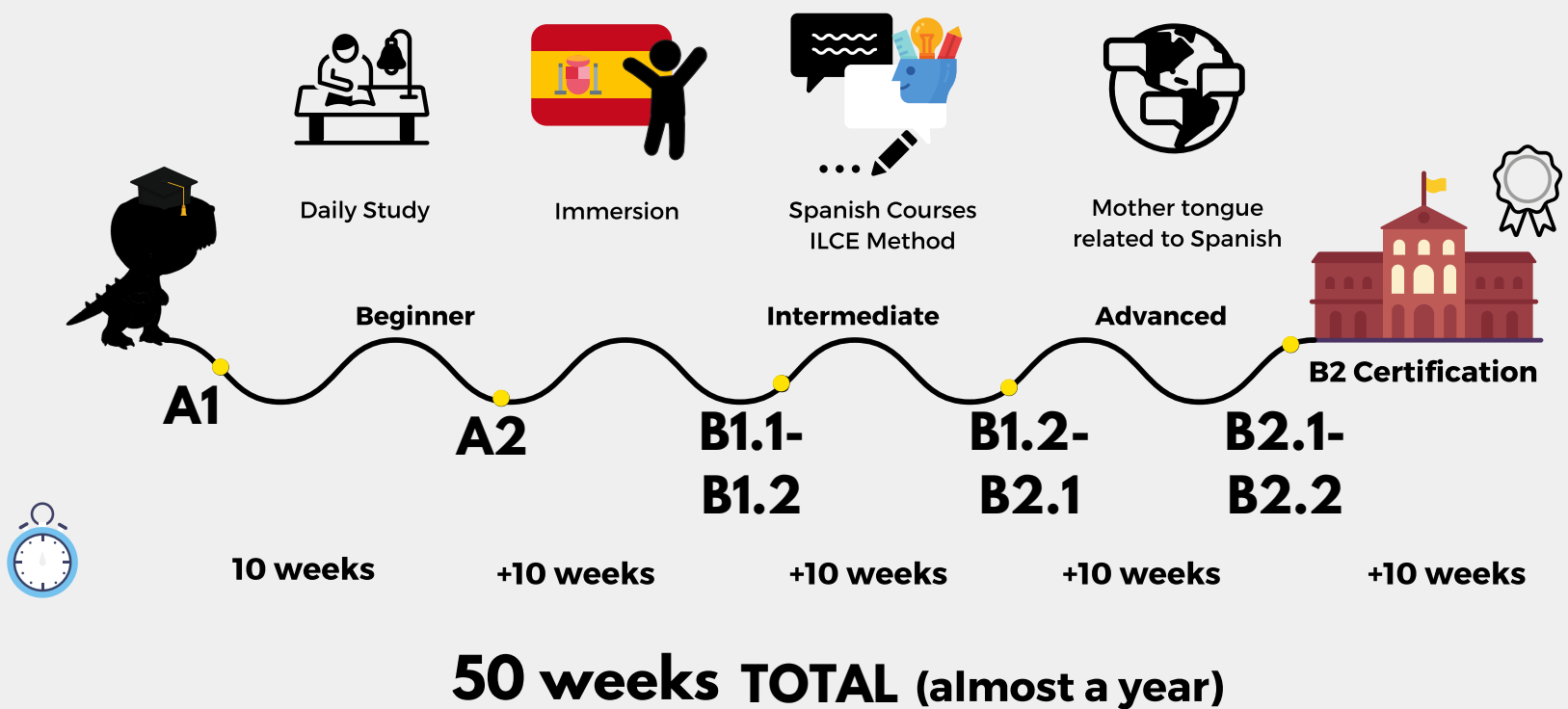
Universidad de Navarra | ILCE



How long does it take to prepare for a **marathon** from scratch?



How long does it take to reach the **advanced level (B2.2)** from scratch?



Practice = ILCE Courses

Race = B2 Certificate

**480 Hours**  
48 ETCS aprox. of ELE Courses

Determined Students Reach their Goal